

**800x
1600 mm**



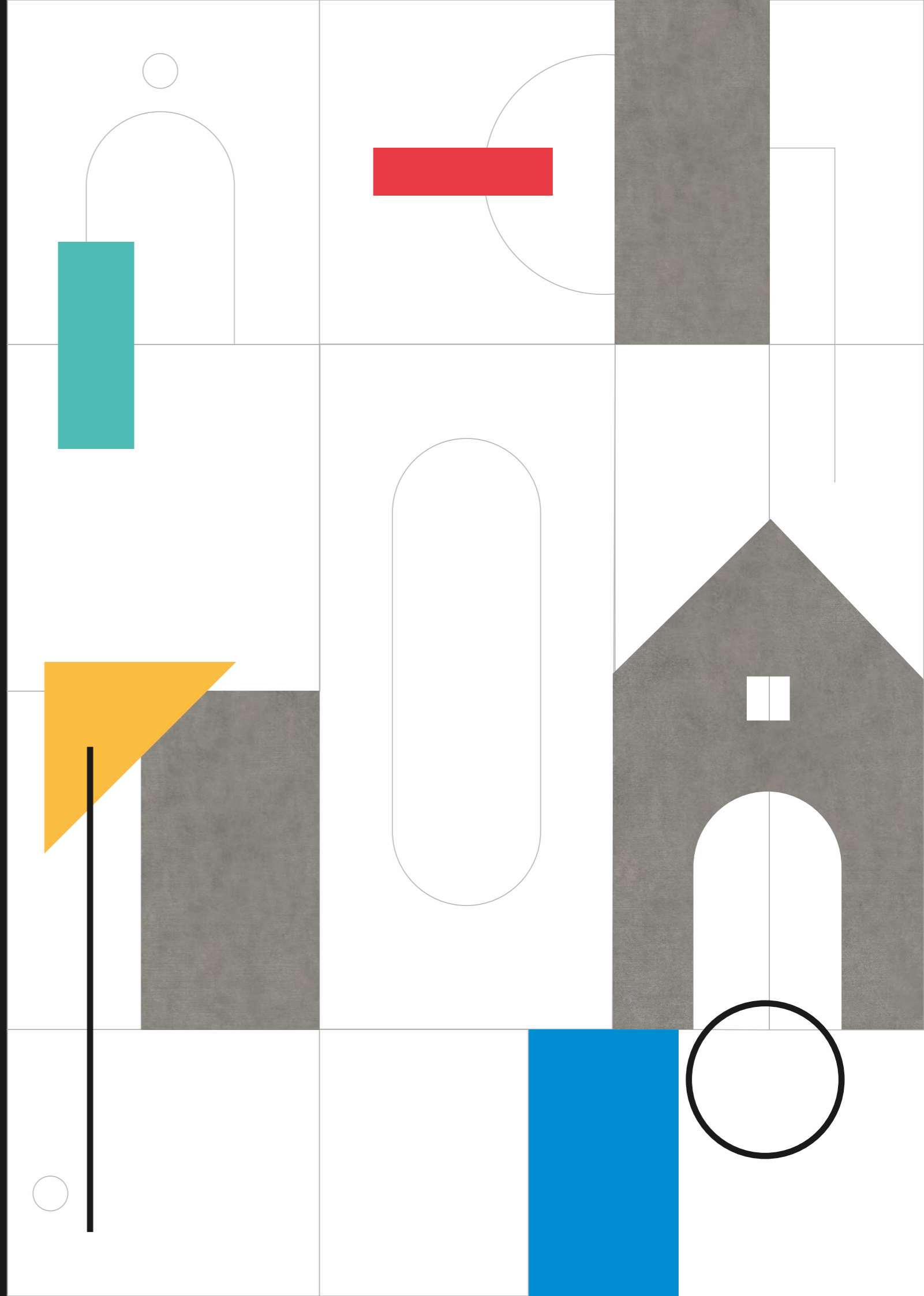
***NATURE
IS OUR HOME***





HOMIE OF CAR- VING

Mix Styles Of Carving





**A
SHA
DOW
OF
MORE
FADES**

**MIXING OF FIVE
ELEMENT OF
THE SURFACE**

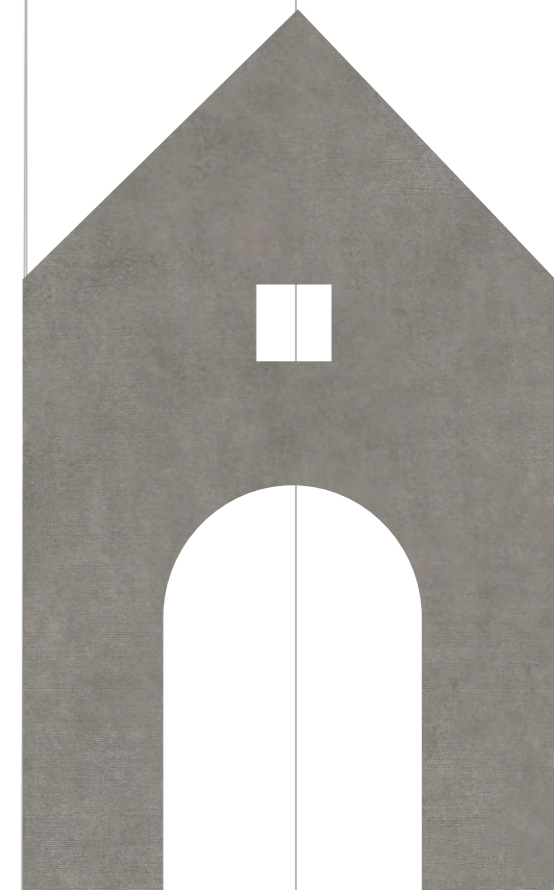
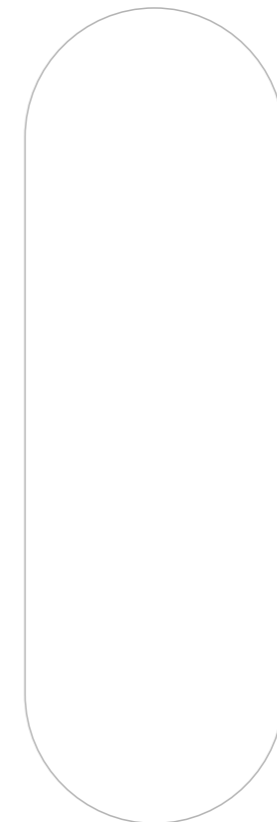
COMBINATION
OF ELEMENT
& SURFACE

**A
NEW
PHI
LO
SO
PHY**

FOR CERAMICS

**CAR-
VING**

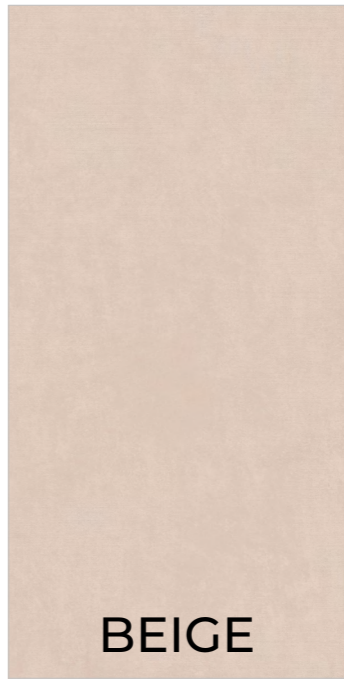
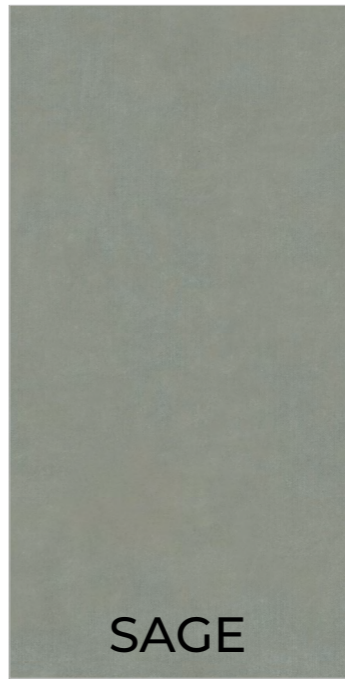
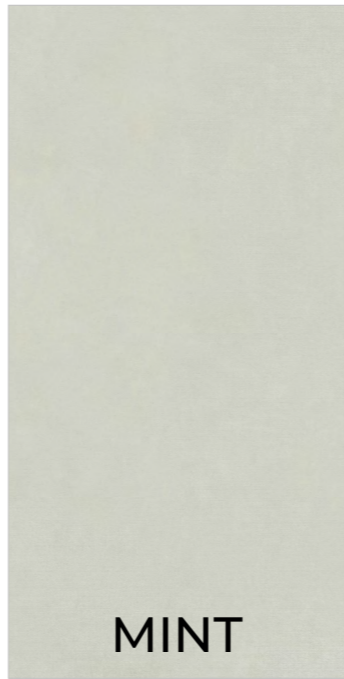
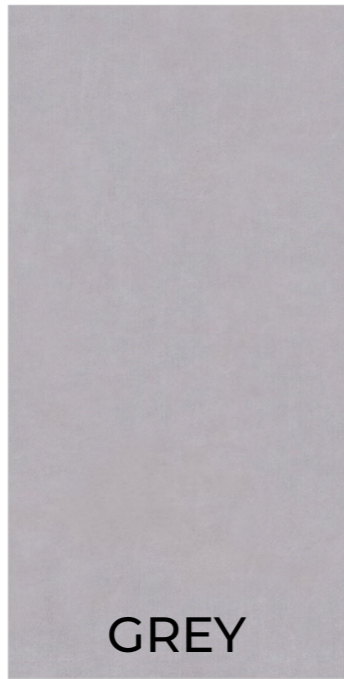
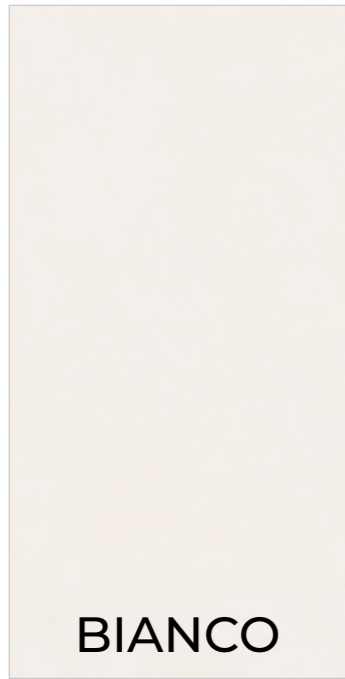
STRUCTURE OR OBJECT,
FROM TOWN PLANNING,
URBAN DESIGN.



FOSTER SERIES



ROCK LINEN SERIES



PRODUCTS INDEX





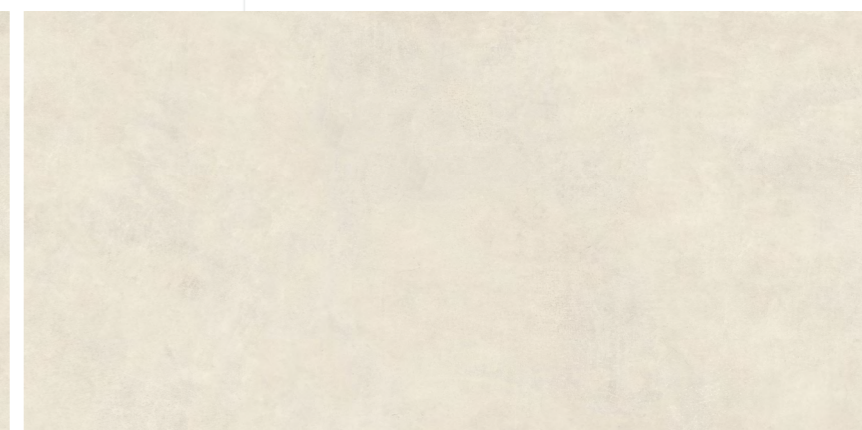
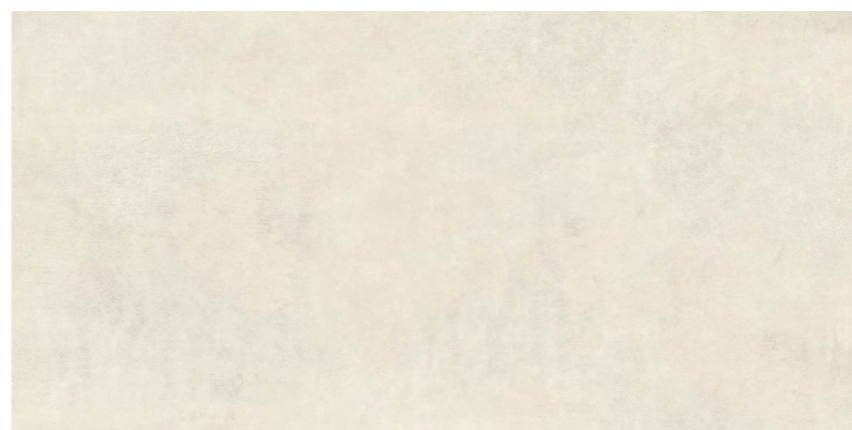
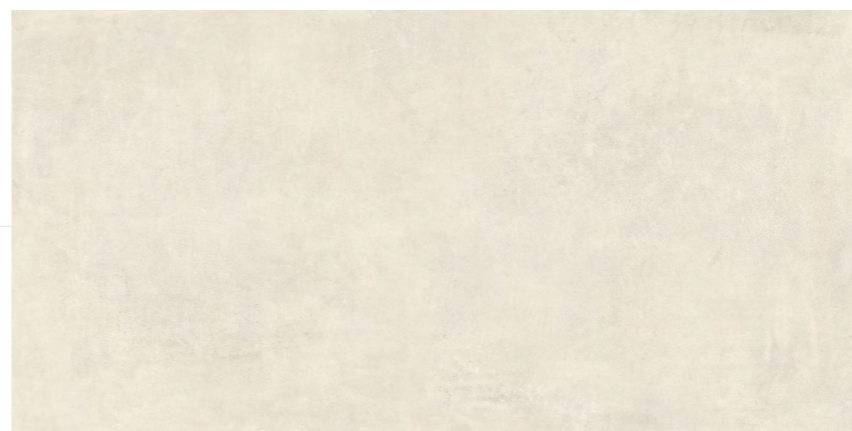


FOSTER BIANCO

**800x1600 mm
Carving**

04 - Random

Touch for Virtual





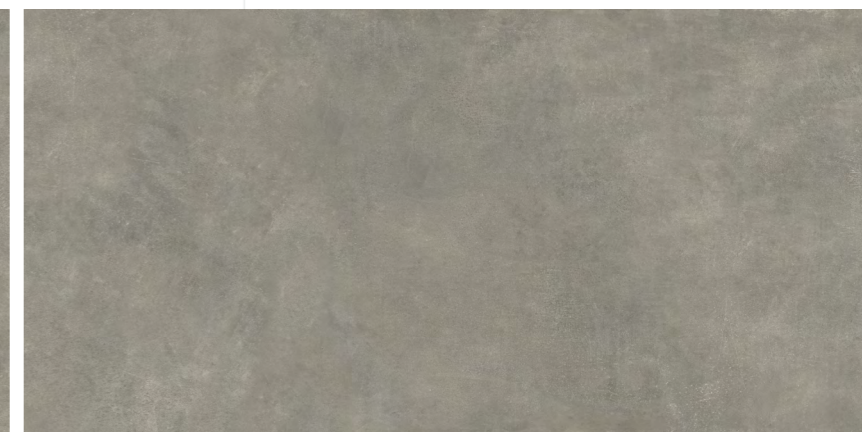
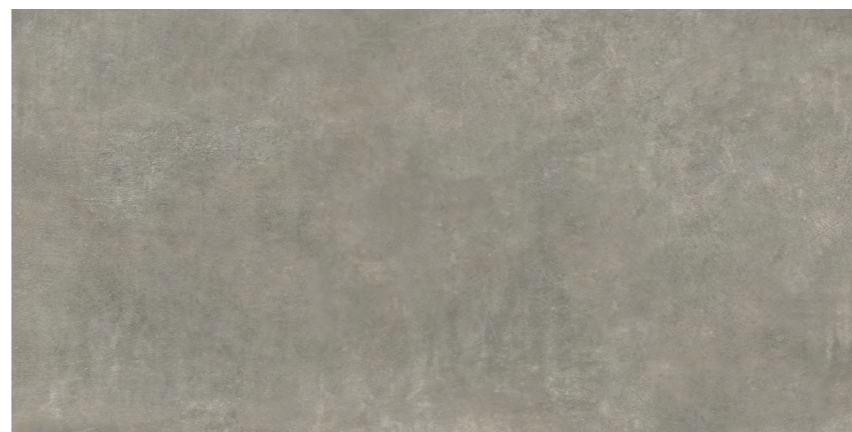
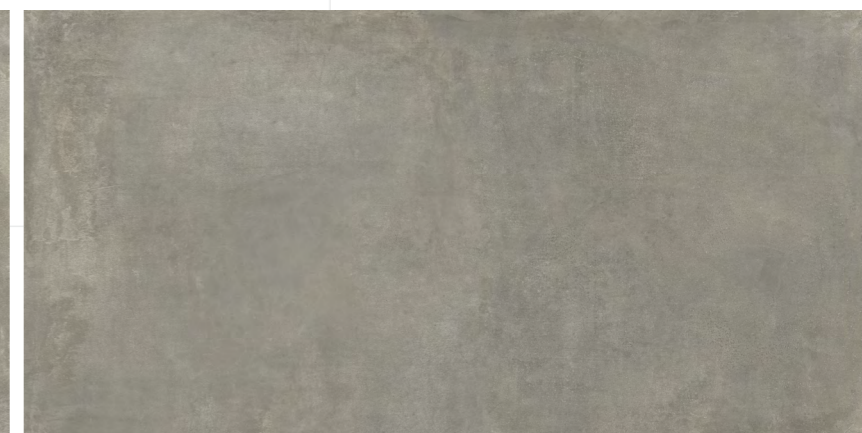
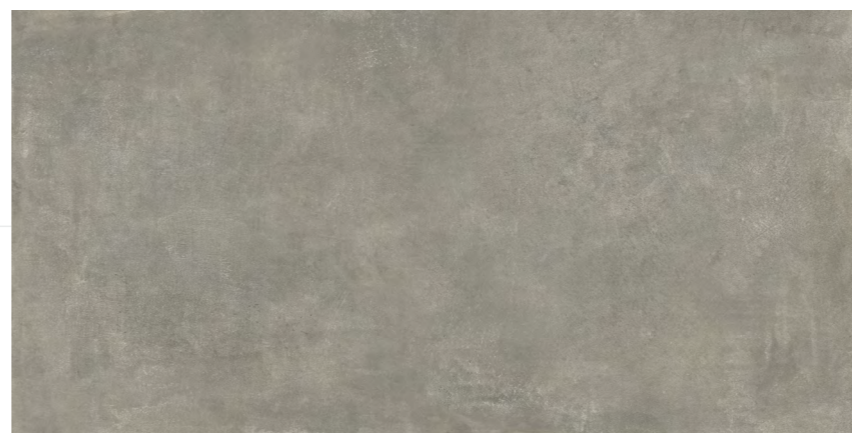


FOSTER GRIS

**800x1600 mm
Carving**

04 - Random

Touch for Virtual





REBELLA
HOTEL

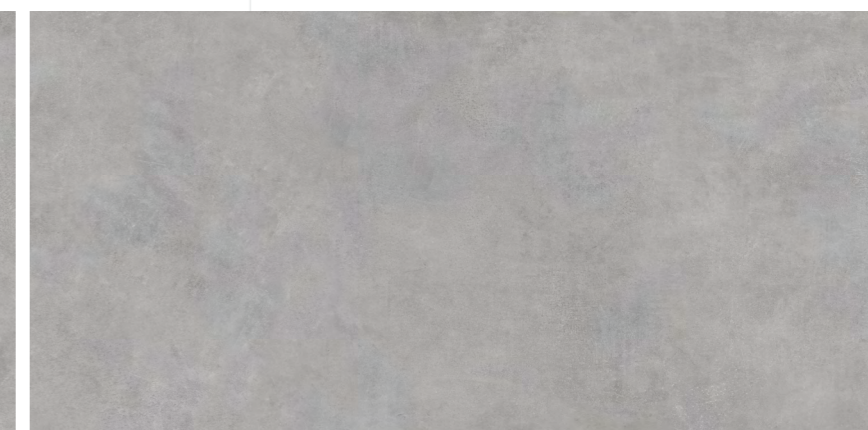
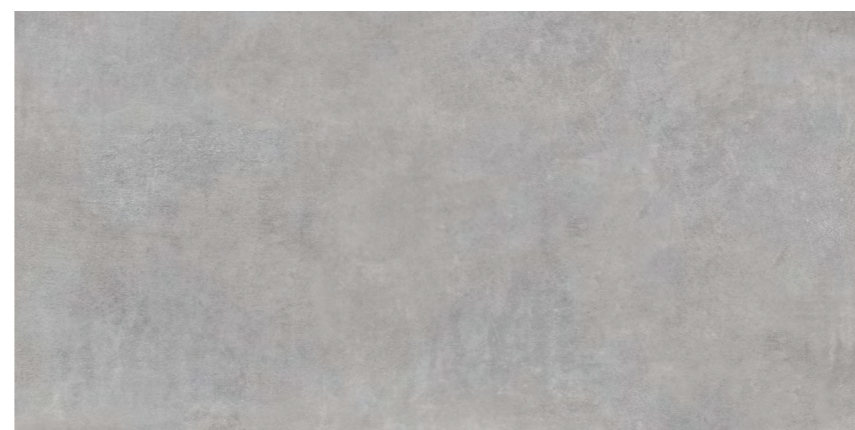
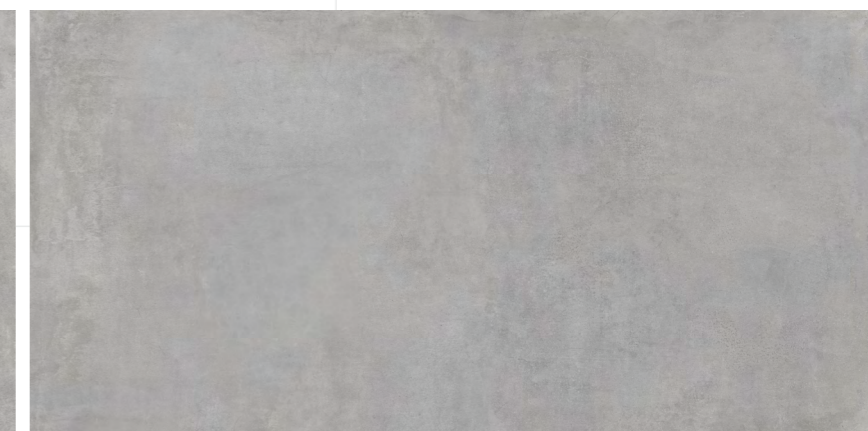
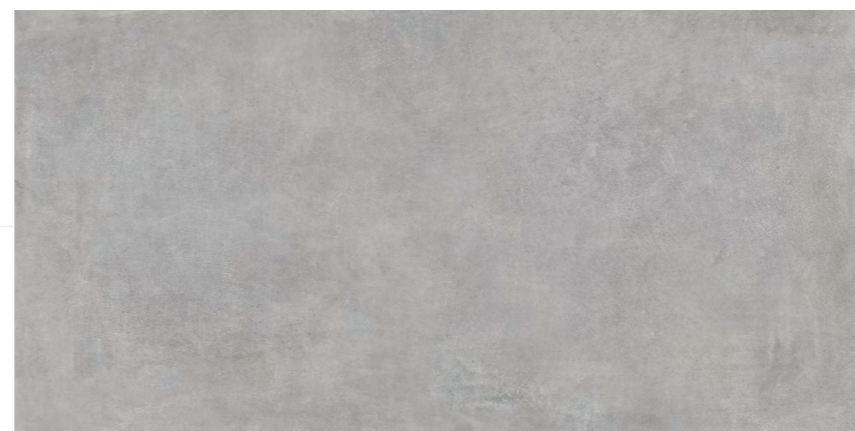


FOSTER GREY

**800x1600 mm
Carving**

04 - Random

Touch for Virtual





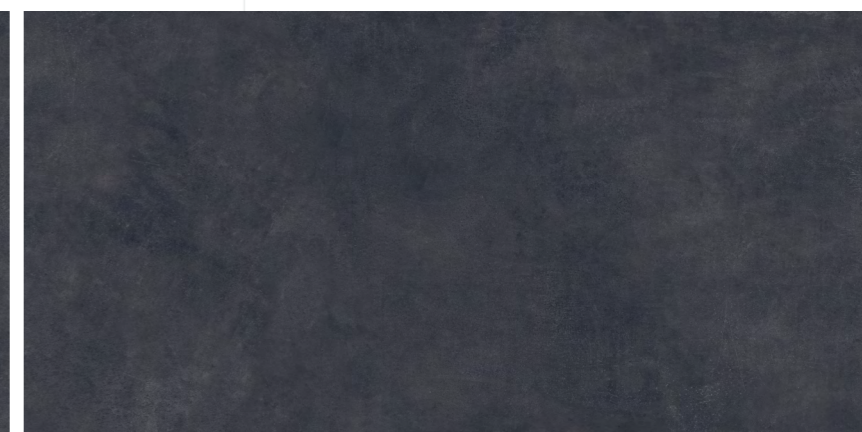
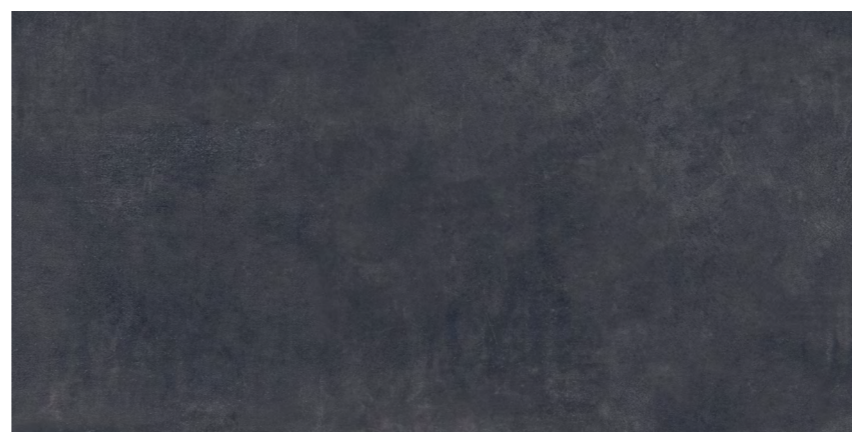
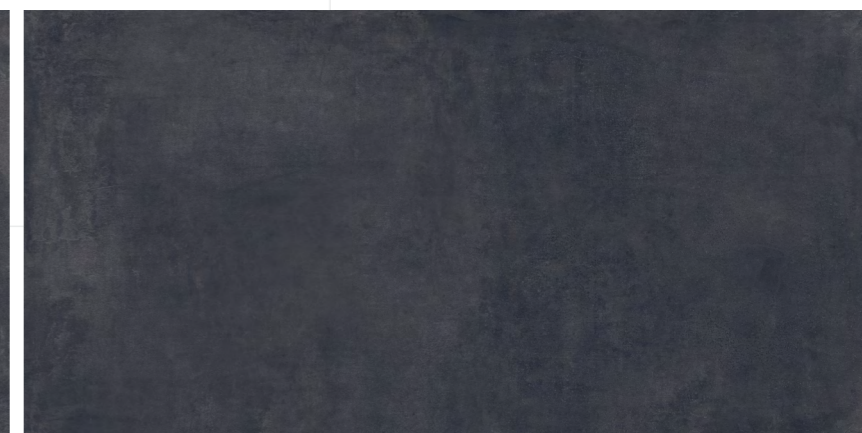
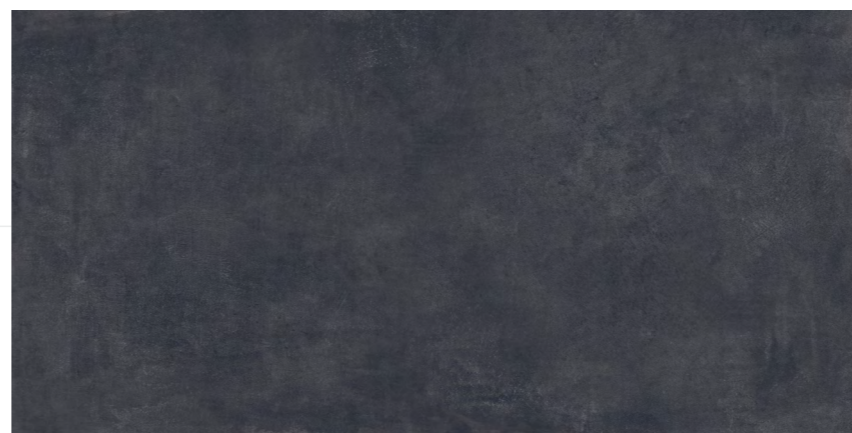


FOSTER NERO

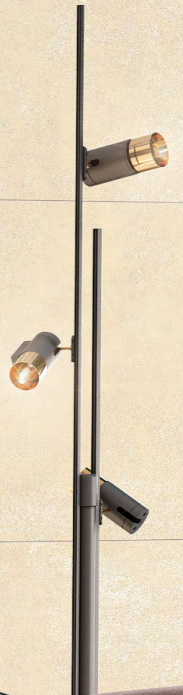
**800x1600 mm
Carving**

04 - Random

Touch for Virtual



Mandarin Oriental



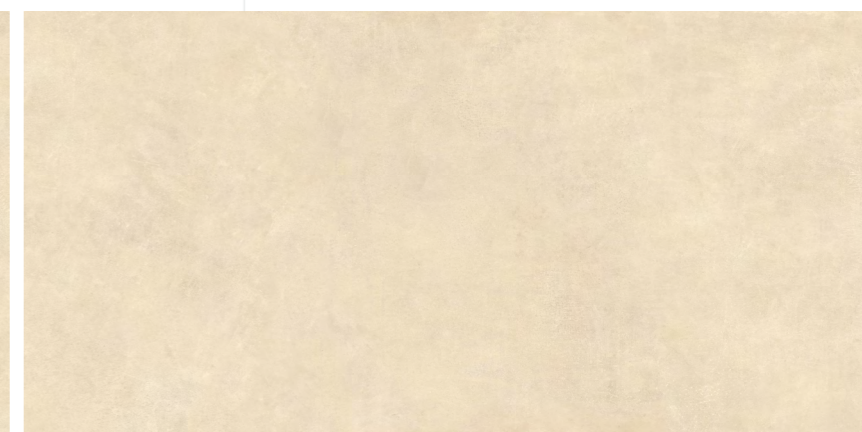


FOSTER BEIGE

**800x1600 mm
Carving**

04 - Random

Touch for Virtual





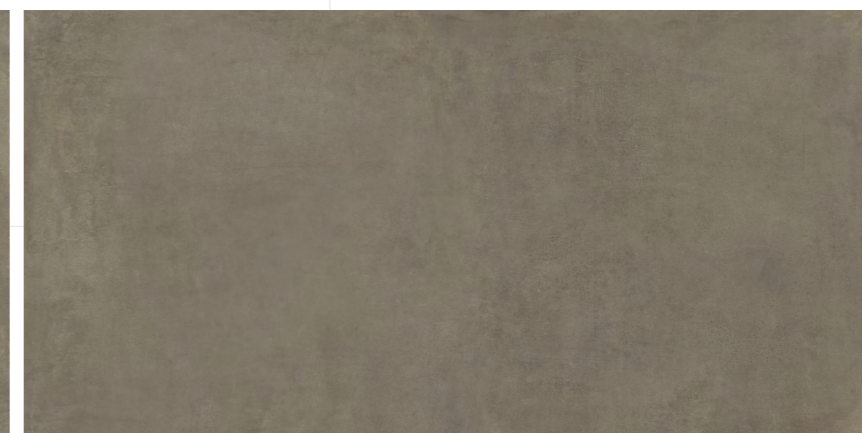


FOSTER TAUPE

**800x1600 mm
Carving**

04 - Random

Touch for Virtual





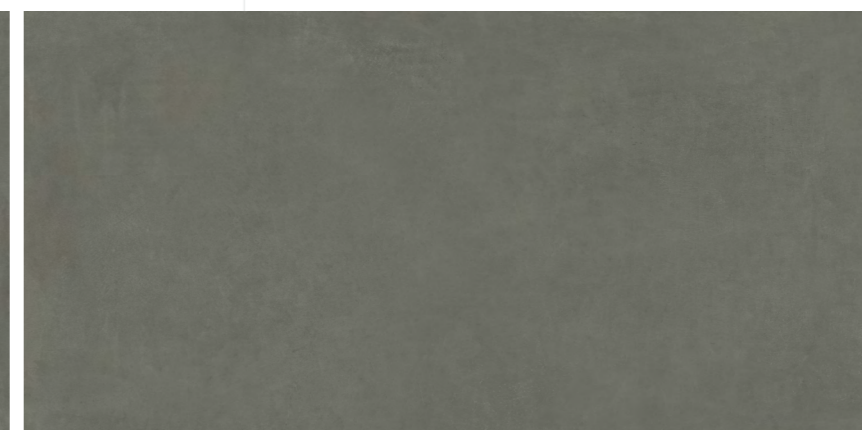
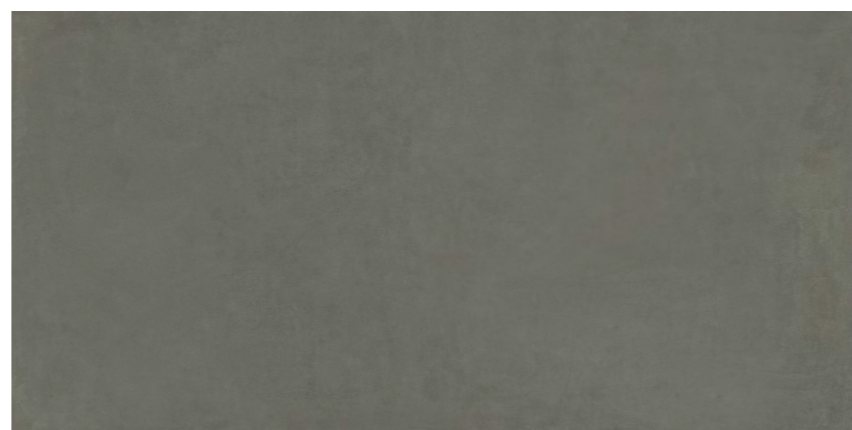


FOSTER GREEN

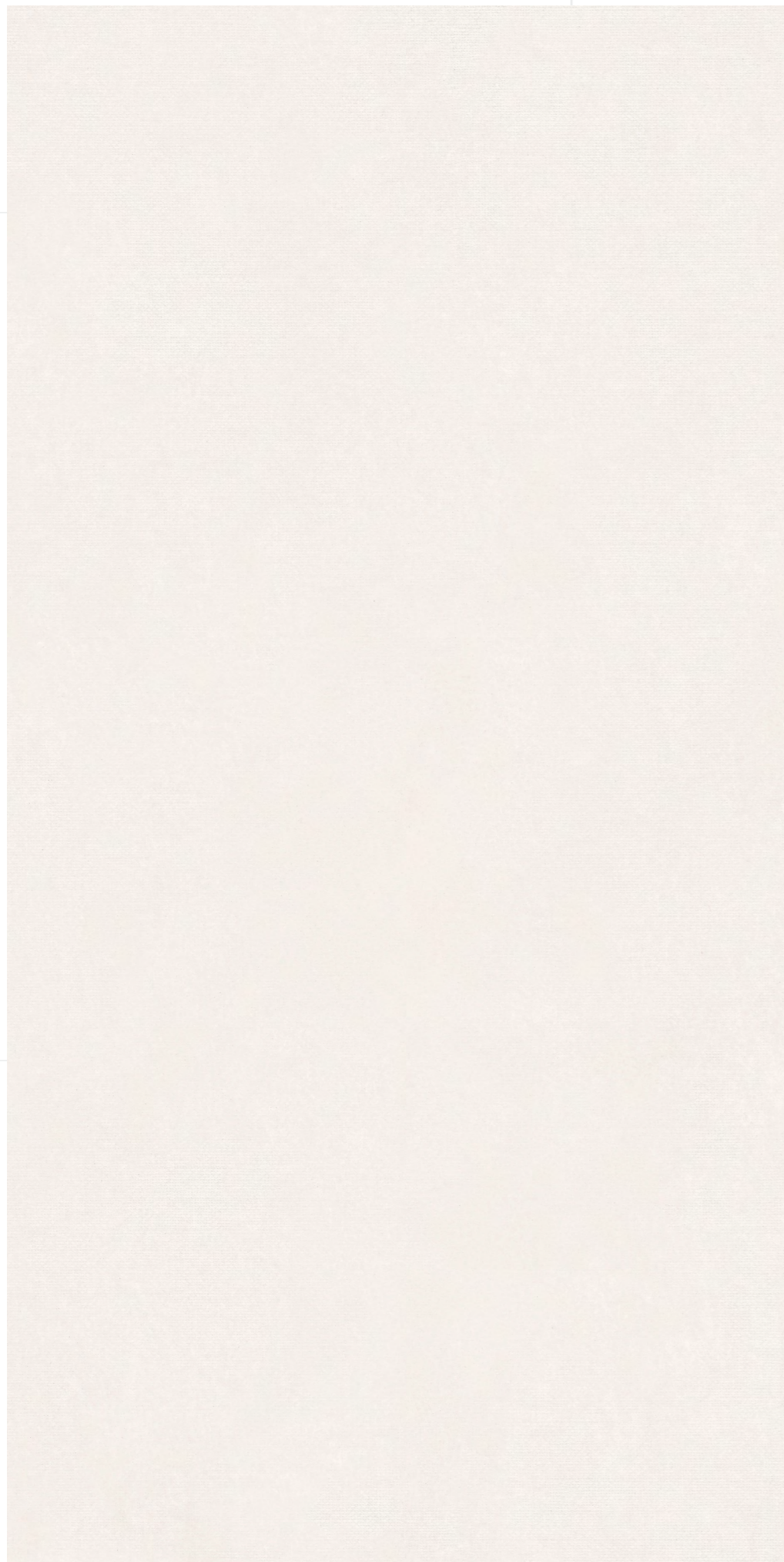
**800x1600 mm
Carving**

04 - Random

Touch for Virtual





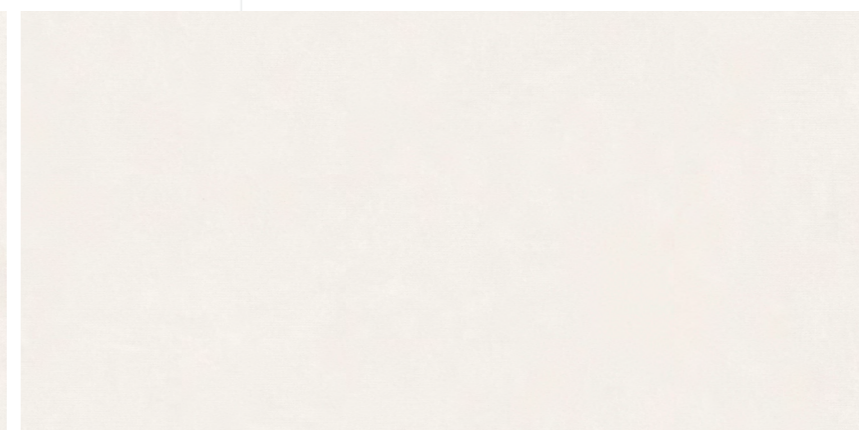
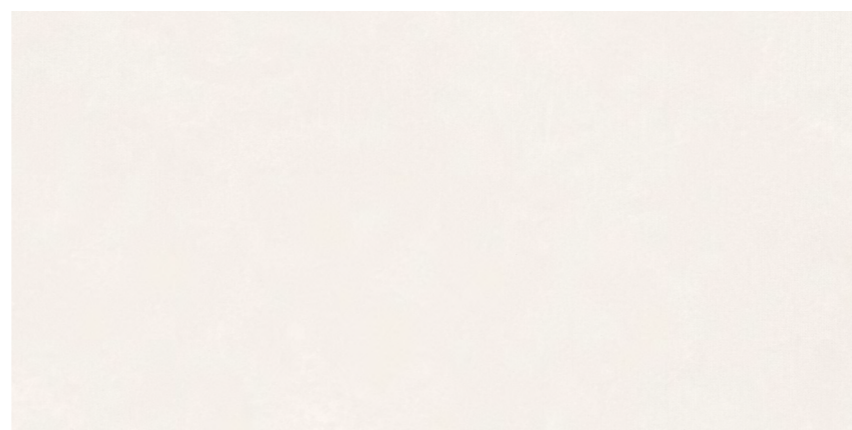
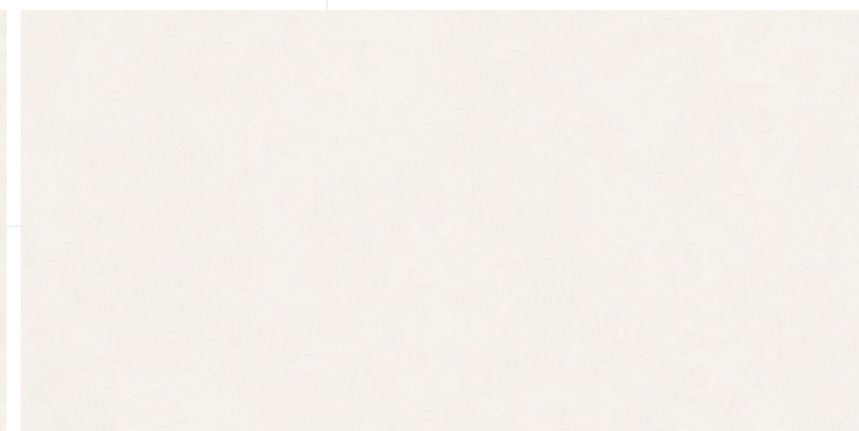
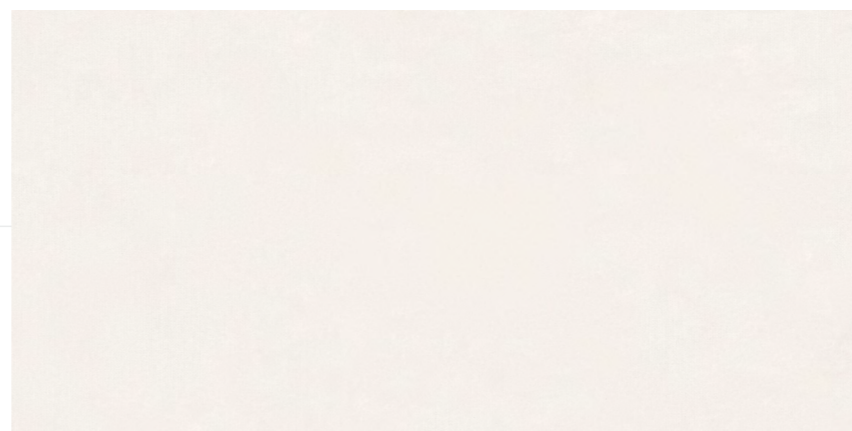


ROCK LINEN BIANCO

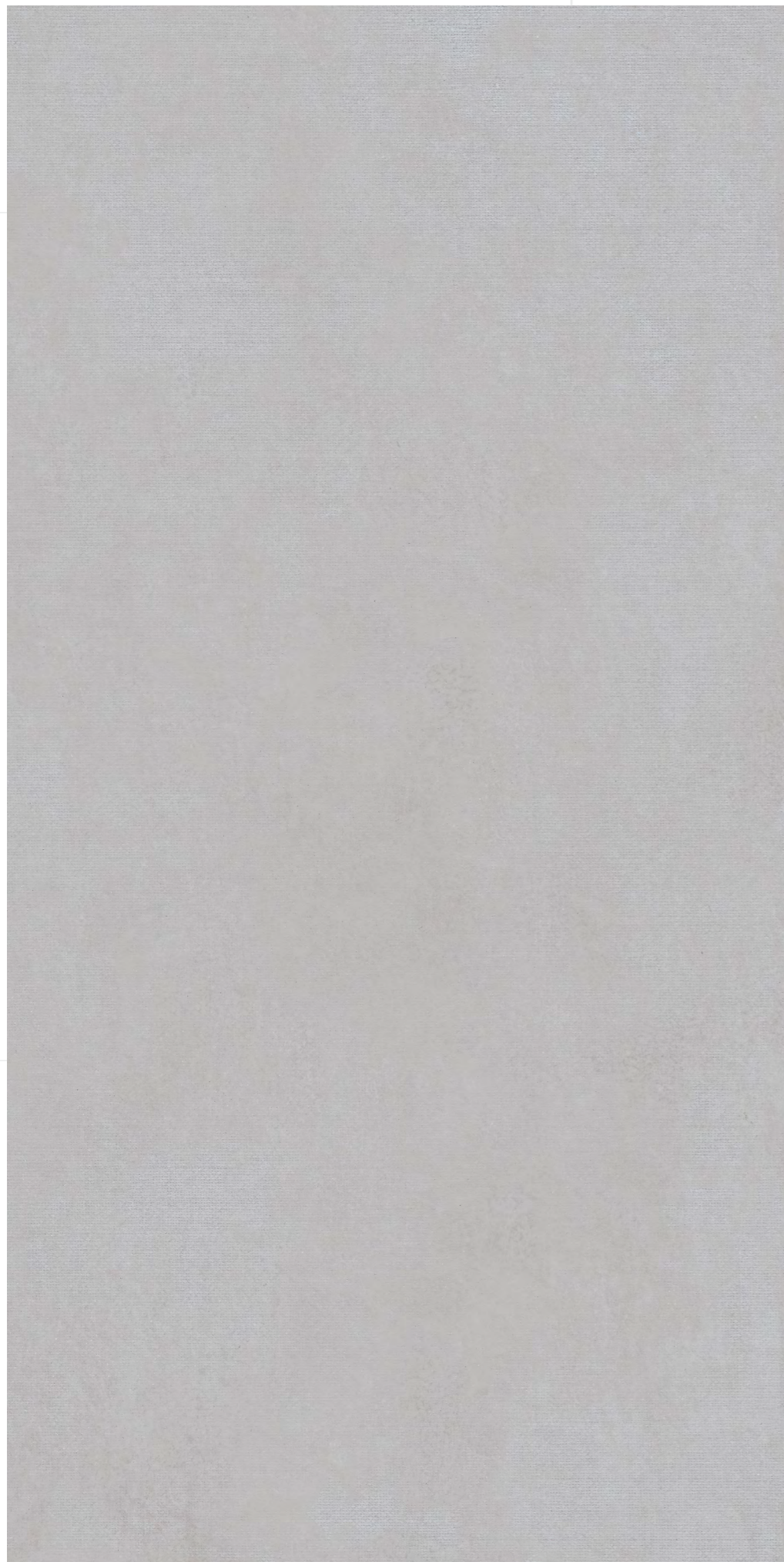
**800x1600 mm
Carving**

04 - Random

Touch for Virtual





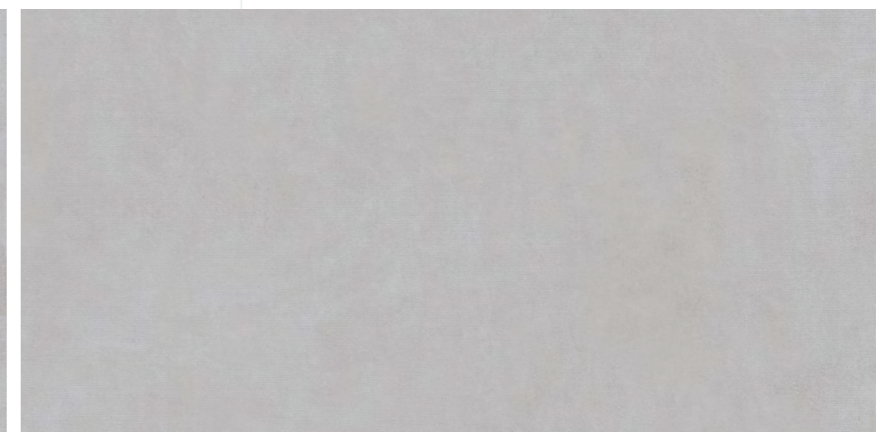
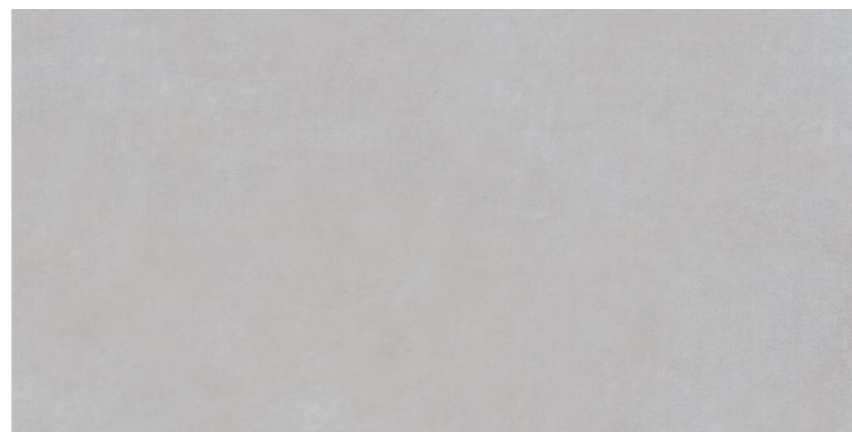
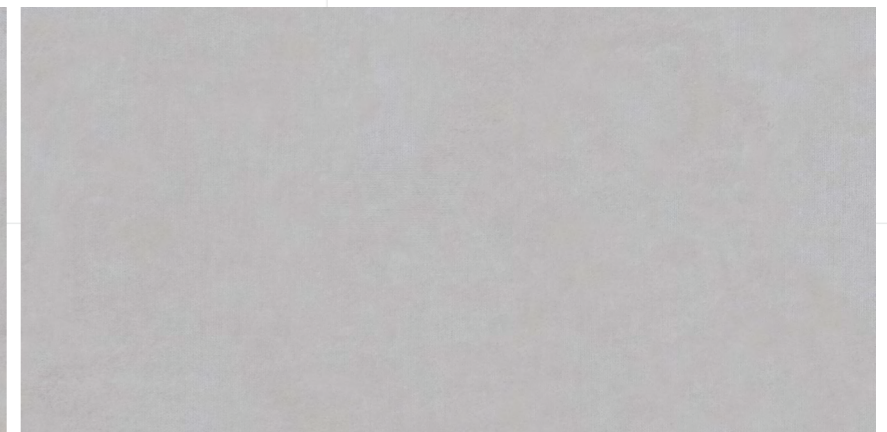
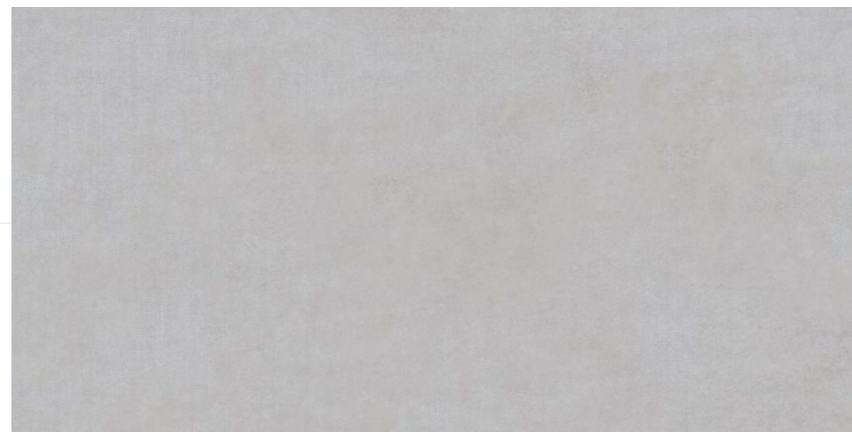
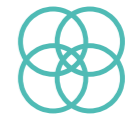


ROCK LINEN GREY

**800x1600 mm
Carving**

04 - Random

Touch for Virtual





Skyline
Hotel

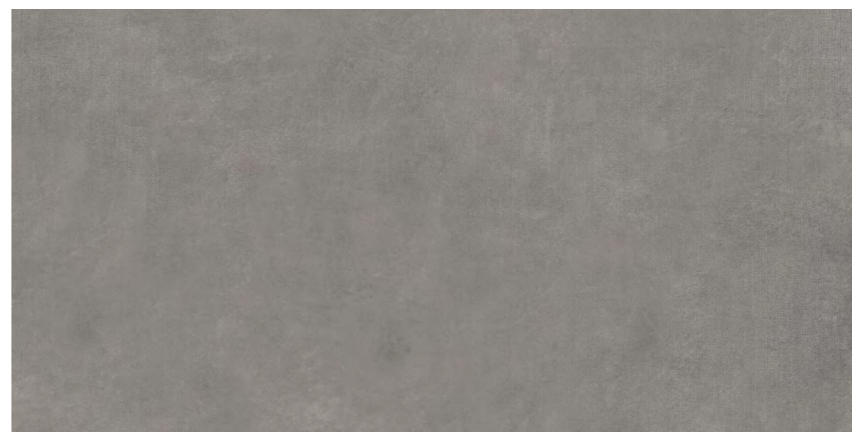
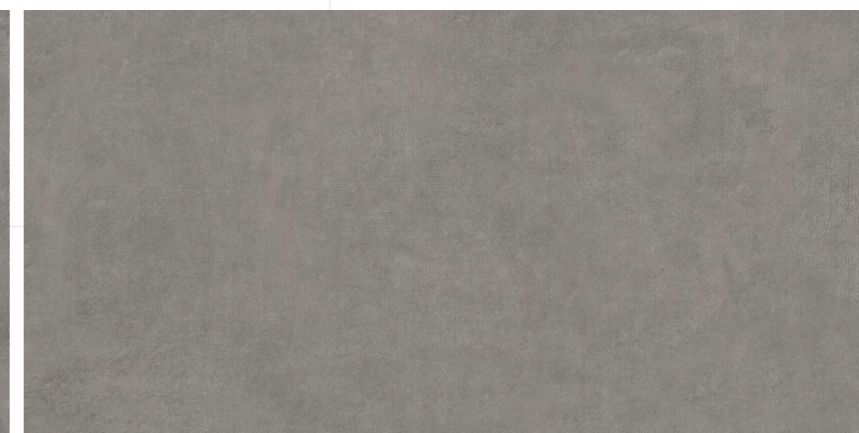


ROCK LINEN GRIS

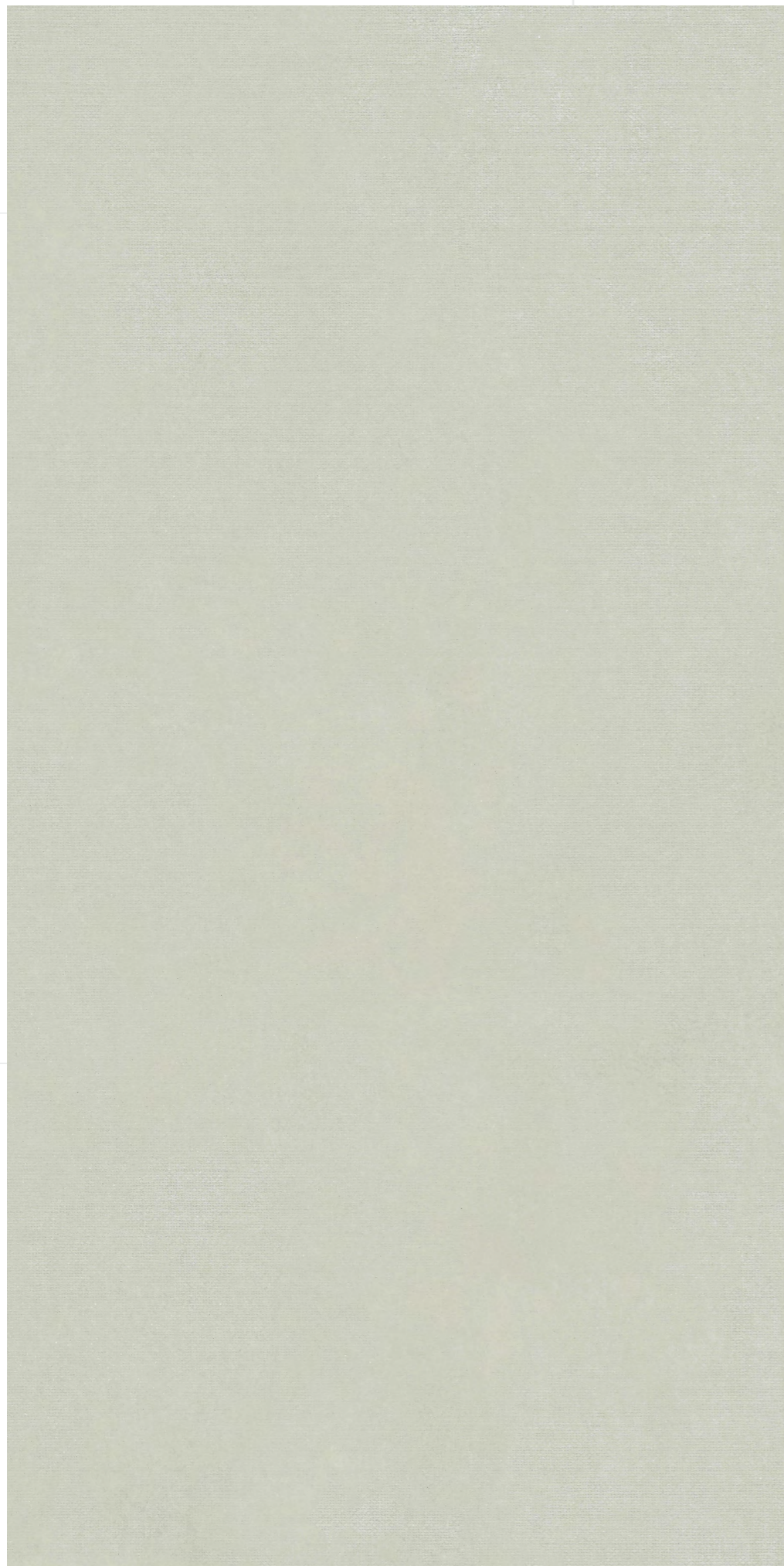
**800x1600 mm
Carving**

04 - Random

Touch for Virtual





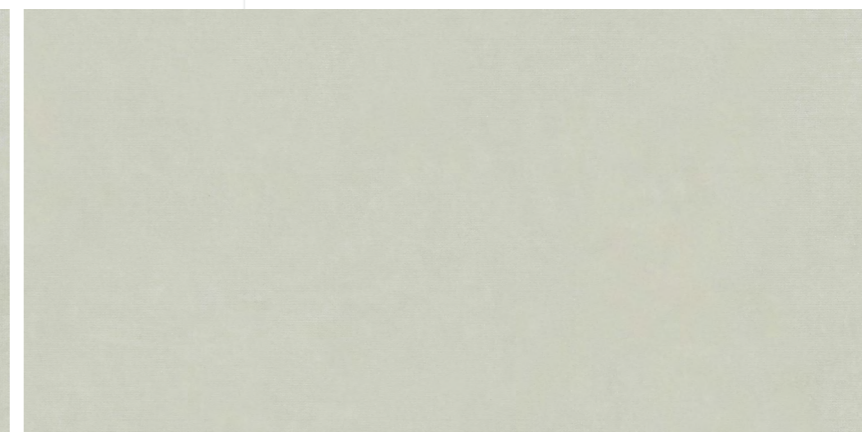
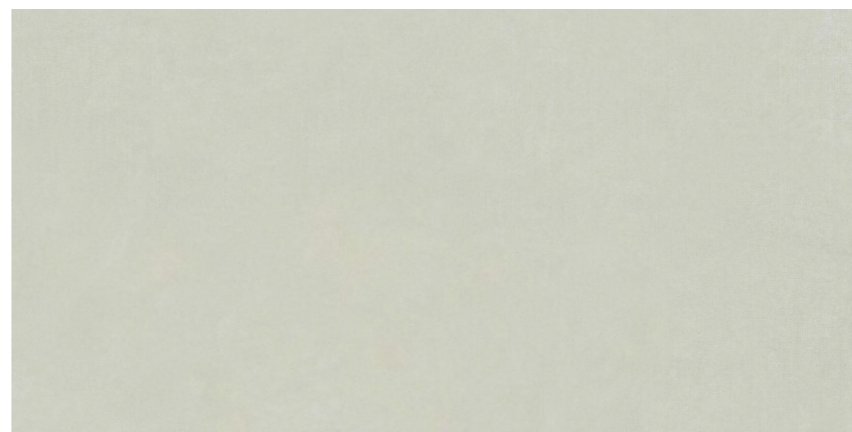
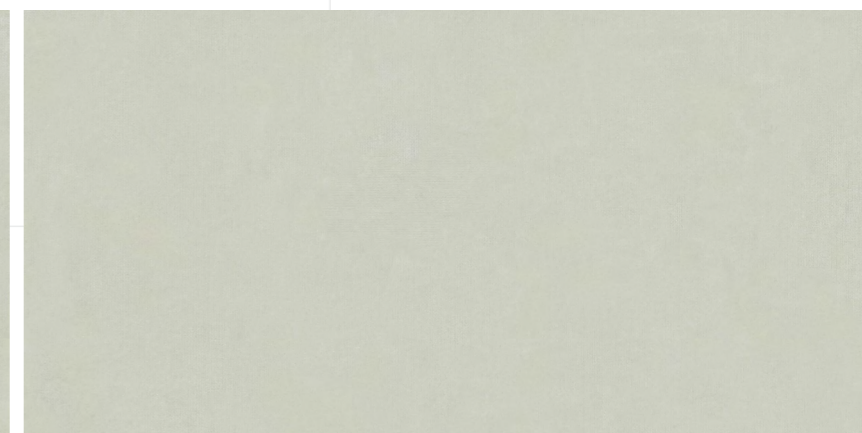
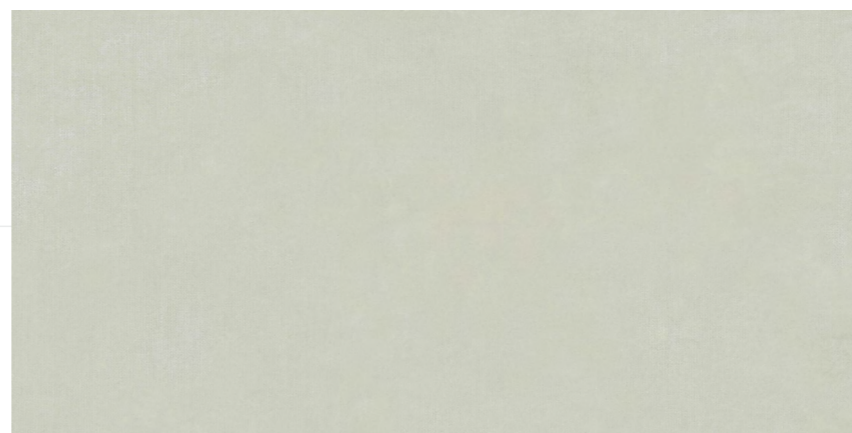


ROCK LINEN MINT

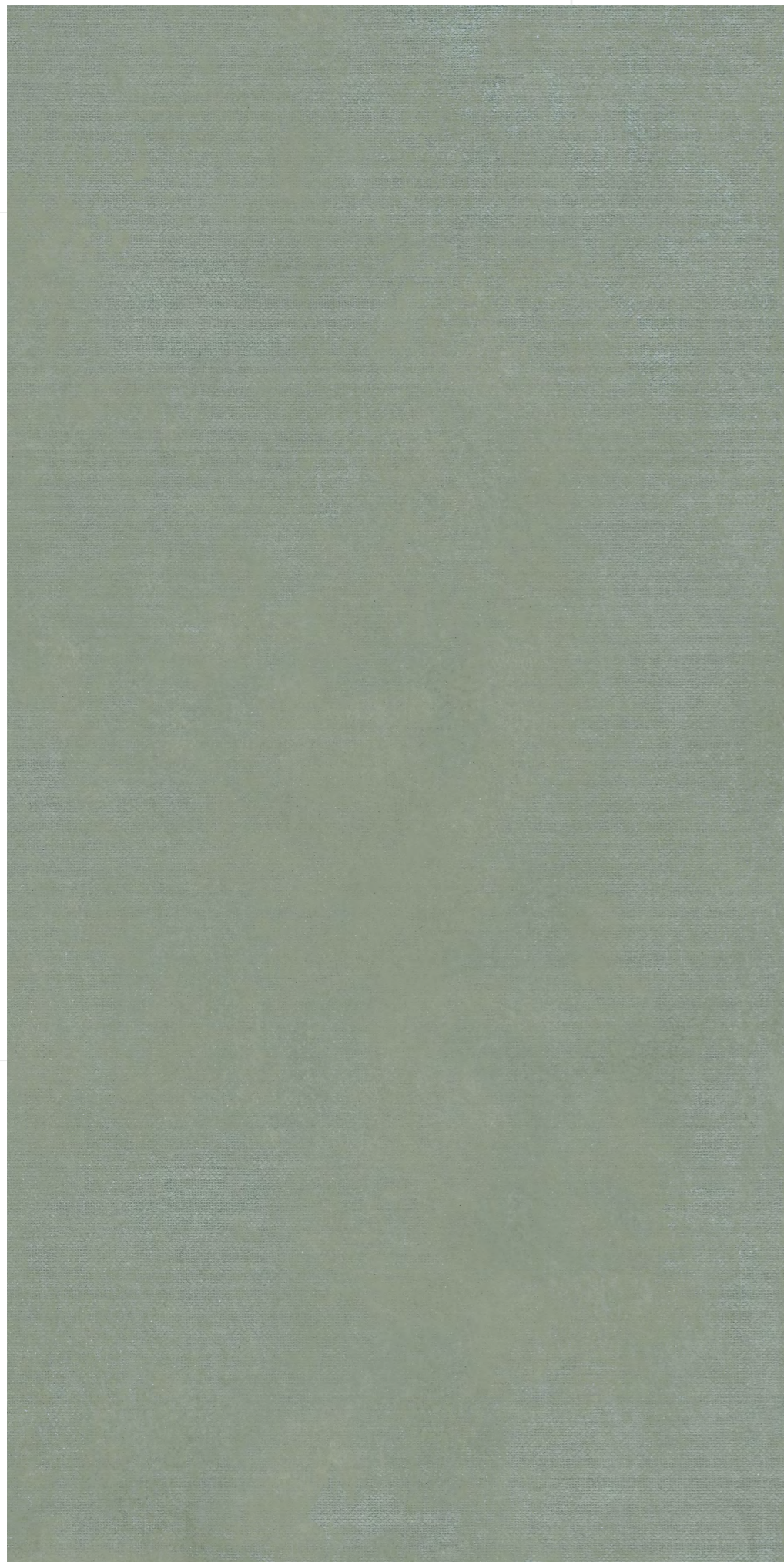
**800x1600 mm
Carving**

04 - Random

Touch for Virtual





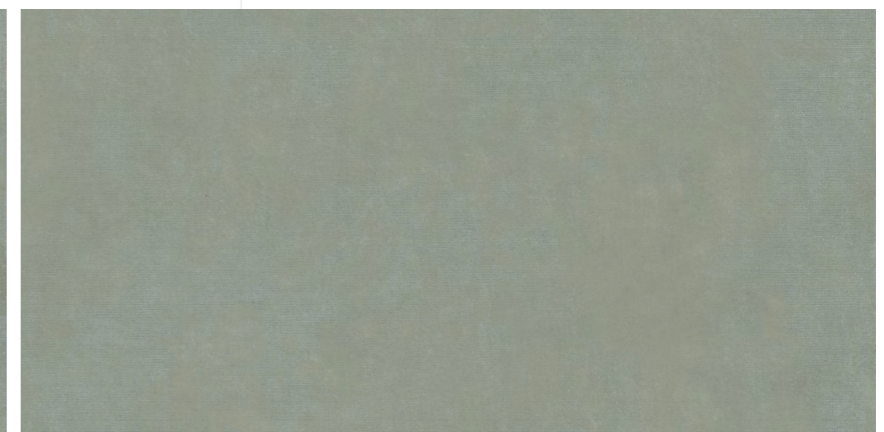
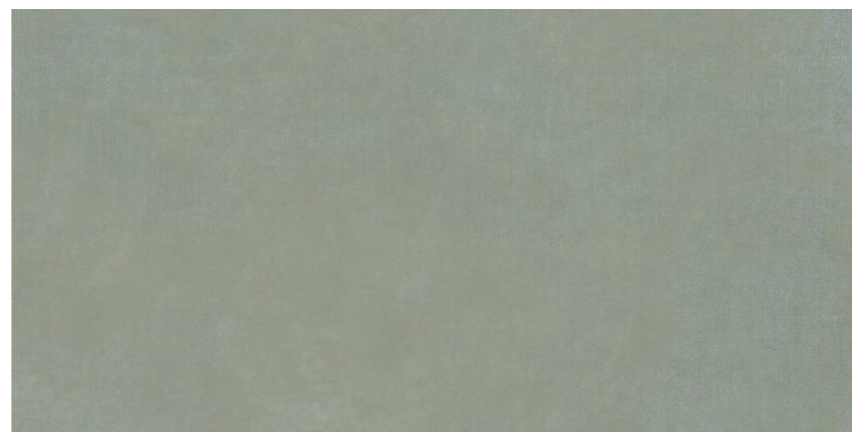
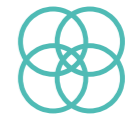


ROCK LINEN SAGE

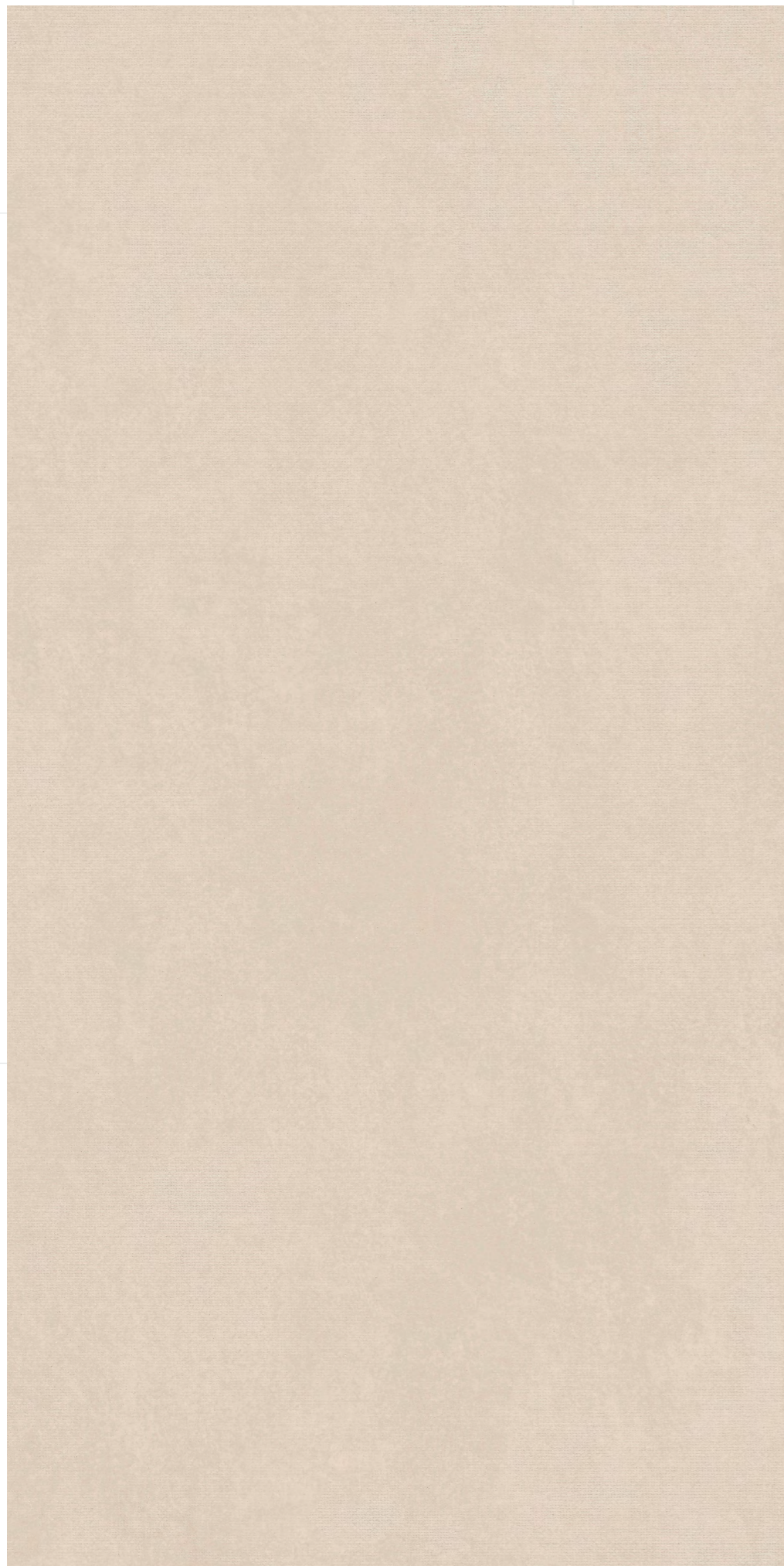
**800x1600 mm
Carving**

04 - Random

Touch for Virtual





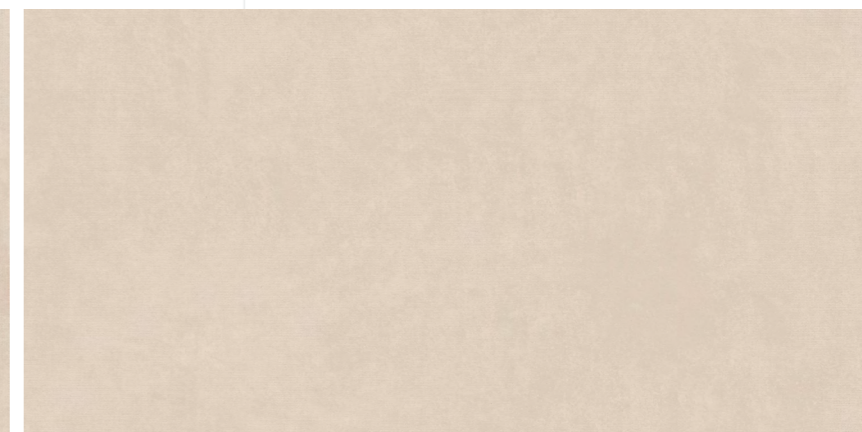
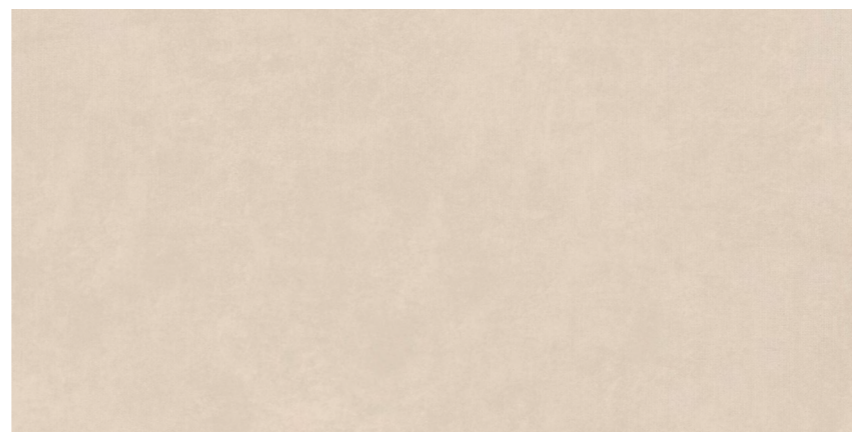
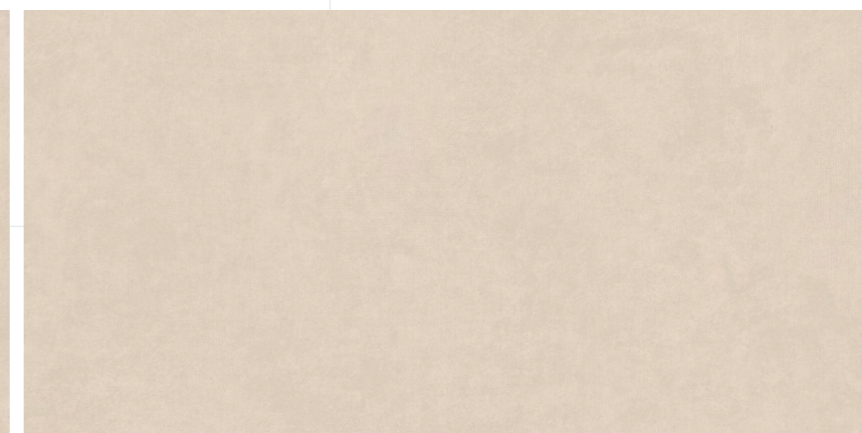


ROCK LINEN BEIGE

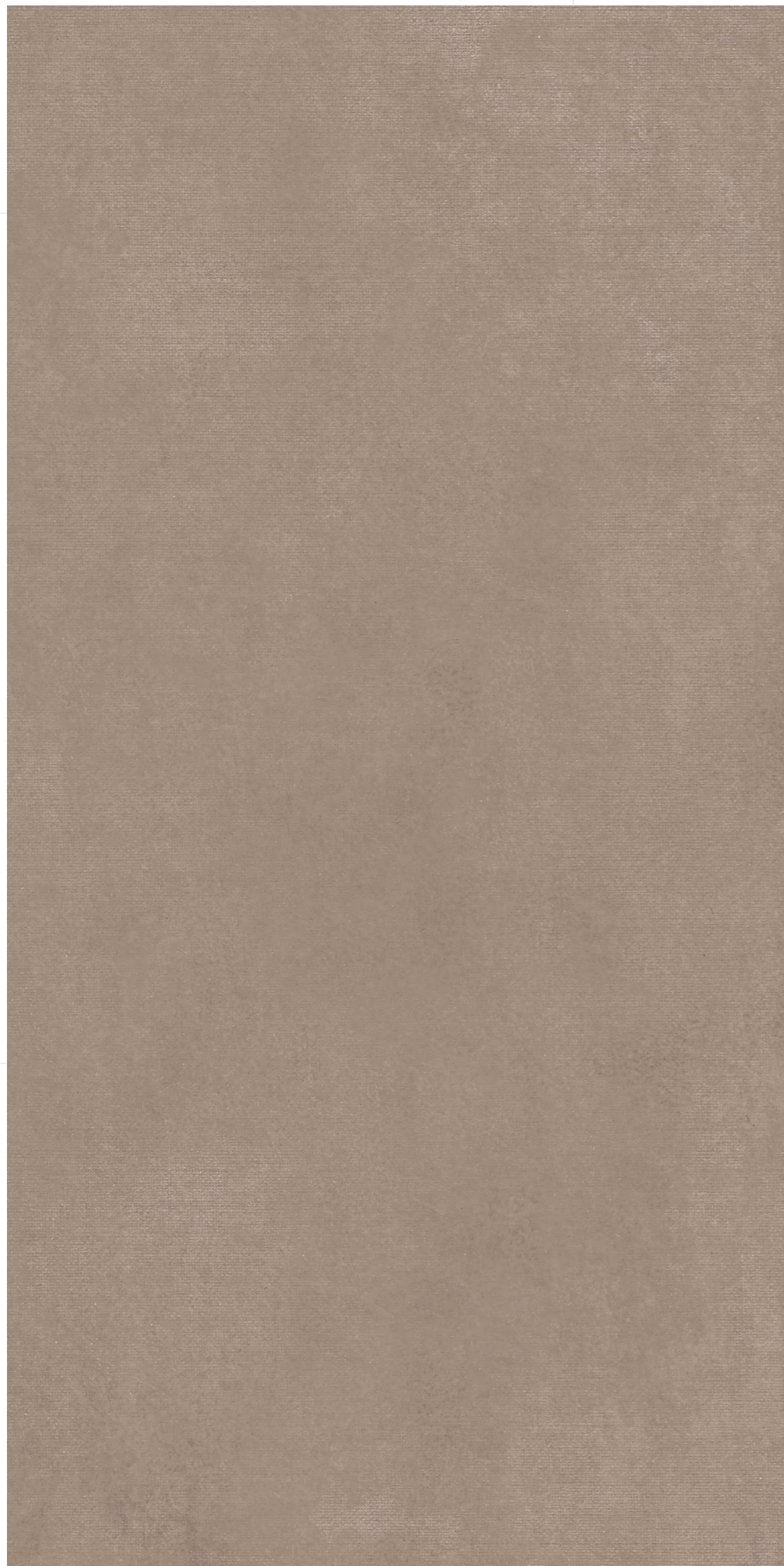
**800x1600 mm
Carving**

04 - Random

Touch for Virtual





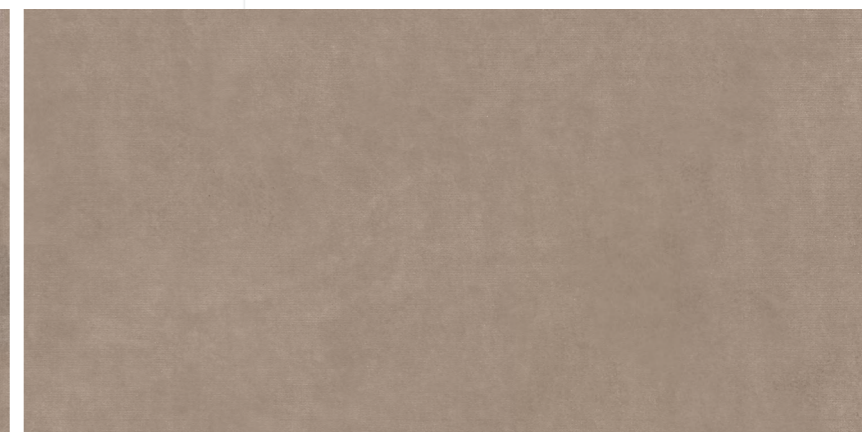
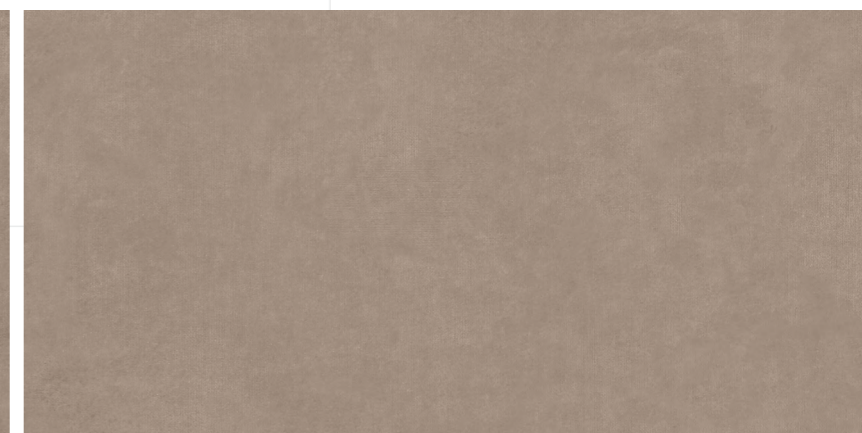
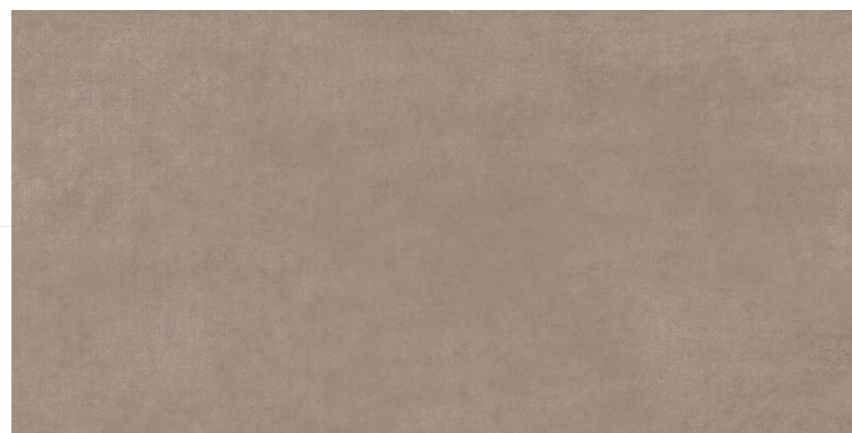


ROCK LINEN SEPIA

**800x1600 mm
Carving**

04 - Random

Touch for Virtual



Technical Specification

CHARACTERISTICS	STANDARD AS PER ISO-13006/En14411 GROUP	VALUES	TEST METHOD
REGULATORY PROPERTIES			
Deviation in Lenth & Width	0.50%	0.20%	ISO - 10545-2
Deviation in Thickness	0.50%	0.50%	ISO - 10545-2
Straightness of Sides	0.50%	0.20%	ISO - 10545-2
Rectangularity	0.50%	0.20%	ISO - 10545-2
Surface Flatness	0.50%	0.20%	ISO - 10545-2
Color Difference	Unaltered	No Change	ISO - 10545-16
Glossiness	As per Mfg.	>90%	Glossmeter
STRUCTURAL PROPERTIES			
Water Absorption	<0.05%	<0.05%	ISO - 10545-3
Apparent Density	>2.00 g/cc	>2.10 g/cc	DIN 51082
MASSIVE MECHANICAL PROPERTIES			
Modulus of Repture	Min 35N/MM2	Min 40N/MM2	ISO - 10545-4
Breaking Strength	Min. 1300 N	Min. 2000 N	ISO - 10545-4
Impact Resistance	As per Mfg.	Min. 0.55	ISO - 10545-5
SURFACE MECHANICAL PROPERTIES			
Surface Abrasion Resistance	As per Mfg.	Min. class 3	ISO - 10545-7
Moh's Hardness	As per Mfg.	Min. class 4	EN 101
THERMO HYGROMETRIC PROPERTIES			
Frost Resistance	No Damage	No Damage	ISO - 10545-12
Thermal Shock Resistance	No Damage	No Damage	ISO - 10545-09
Moisture Expansion	Nil	Nil	ISO - 10545-10
Thermal Expansion	Max 9.0x10 ⁻⁶	Max 6.5x10 ⁻⁶	ISO - 10545-08
Crazing Resistance	As per Mfg.	Min 10 Cycle	ISO - 10545-11
CHEMICAL PROPERTIES			
Chemical Resistance	No Damage	No Damage	ISO - 10545-13
Stain Resistance	Resistant	Resistant	ISO - 10545-14
SAFETY PROPERTIES			
Slip Resistance	As per Mfg.	>0.40	ISO - 10545-17
Fire Resistance	As per Mfg.	Fire Proof	N.A.

Packing Detail

SIZE (in mm)	THICKNESS APPROX	PIECES / PER BOX	COVERAGE AREA IN SQ. FT	BOX WEIGHT (APPROX.)
800X1600	9 MM	2	27.55	52 KG